

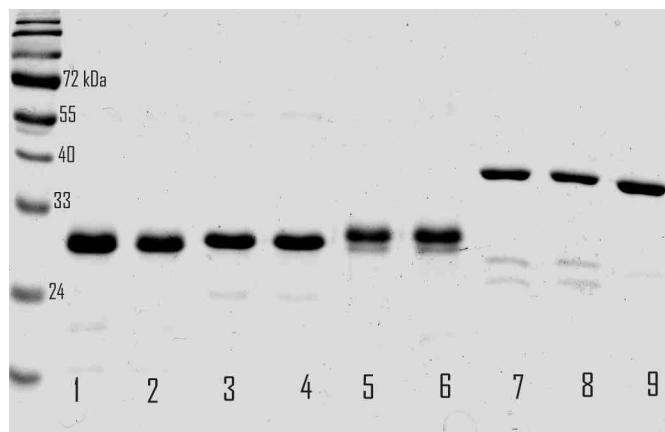
**Centre for AIDS Reagents**

**Data Sheet**

<b>DESCRIPTION:</b>	Recombinant Nef protein (C-clade consensus sequence)
<b>REPOSITORY REFERENCE:</b>	ARP693.1 ARP693.2 (Low Endotoxin)
<b>CHARACTERISTICS:</b>	Recombinant Nef-C protein is expressed as His tag-fusion protein in <i>E. coli</i> using expression vector pET24 and purified using Ni-agarose columns (Qiagen). Endotoxins were removed by phase separation using Triton X-114 (described by Liu et al. <i>Clinical Biochem.</i> 30, 1997, p. 455)
<b>SOURCE:</b>	FIT Biotech Oyj Plc Eesti Filiaal, Tartu, Estonia
<b>PRESENTATION:</b>	50ug. In PBS +10% glycerol (ARP693.2 may contain traces of Triton X-114).
<b>NOTE:</b>	Prepared for AVIP collaborative study. Non AVIP members are restricted to 1 vial per request.
<b>PURITY:</b>	See Fig.1 for SDS-PAGE and Fig.2 for Western blot analysis.
<b>STORAGE:</b>	Store at $-70^{\circ}\text{C}$ or less. Avoid multiple freeze-thaw cycles as product degradation may occur.
<b>ACKNOWLEDGEMENTS:</b>	Publications should acknowledge the donor of the reagent and the Centre for AIDS Reagents. Suggested wording can be found on our website in the "Acknowledgement" section at:-  <a href="http://www.nibsc.ac.uk/spotlight/centre_for_aids_reagents.aspx">www.nibsc.ac.uk/spotlight/centre_for_aids_reagents.aspx</a>  Please also ensure that you send us a copy of any papers resulting from work using reagents acquired through CFAR, this can be by e-mail or printed copy.

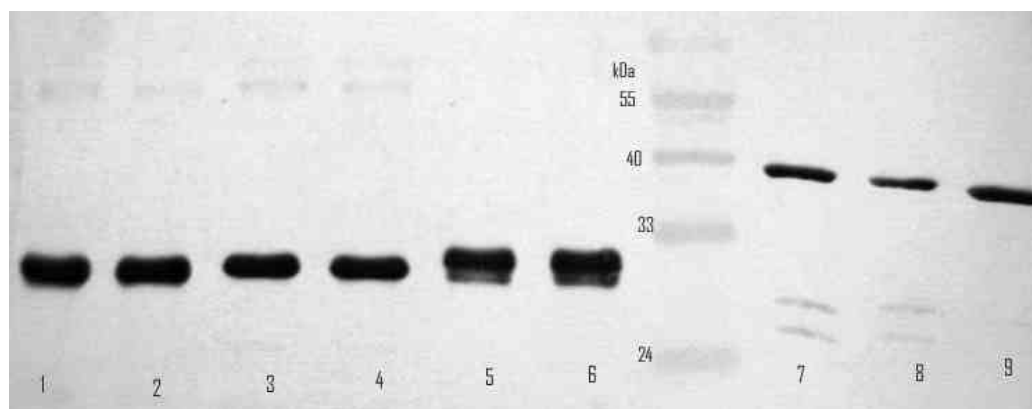
**PROTEIN SEQUENCE:**

MGGKWSKCSIVGWPAVRERMRRTEPAAEGVGAASQDLDKHGALTSSNTAANNADCAWLEAQEDEEE  
 VGFPVRPQVPLRPMTYKAAFDSLFFLKEKGGLEGLIYSKKRQEILDLWVYHTQGYFPDWQNYTPGPGV  
 RYPLTFGWCFKLVVDPREVEEANEGENNCLLHPMSQHGMEDEHREVLKWKFDShLARRHMARELH  
 PEYYKDCLEHHHHHH



**Figure 1.** SDS-PAGE analysis of purified proteins (Coomassie staining)

Lane 1- Nef-A, 1 µg  
 Lane 2- Nef-A low endo, 1 µg  
 Lane 3- Nef-B 1 µg  
 Lane 4- Nef-B low endo 1 µg  
**Lane 5- Nef-C 1 µg**  
**Lane 6- Nef-C low endo 1 µg**  
 Lane 7- p17/24-B 1 µg  
 Lane 8- p17/24-B low endo 0.8 µg  
 Lane 9- p17/24-C 1 µg



**Figure 2.** Western blot analysis of purified proteins, detected by monoclonal antibody against His-tag.

Lane 1- Nef-A 0.5 µg  
 Lane 2- Nef-A low endo 0.5 µg  
 Lane 3- Nef-B 0.5 µg  
 Lane 4- Nef-B low endo 0.5 µg  
**Lane 5- Nef-C 0.5 µg**  
**Lane 6- Nef-C low endo 0.5 µg**  
 Lane 7- p17/24-B 0.5 µg  
 Lane 8- p17/24-B low endo 0.4 µg  
 Lane 9- p17/24-C 1 µg 0.5 µg